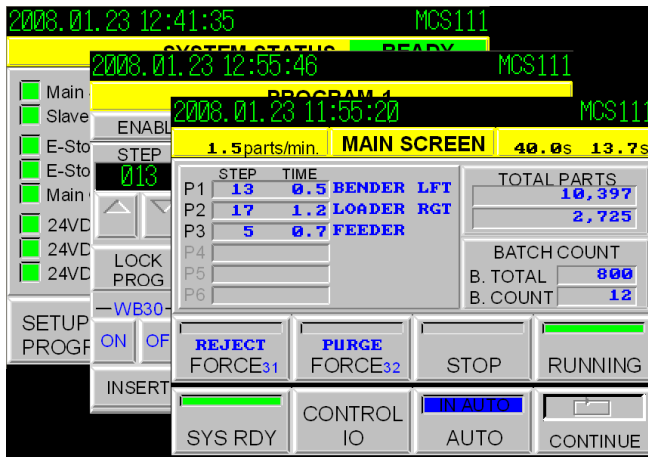


MCS100 Software



Description

The MCS family of Machine Control Software is based on a standard hardware platform, allowing for various standard software programs based on individual machine control requirements. Our standardized Control Software affords you:

- Standard Operator Functions
- Standard Maintenance Functions
- Programming without PLC Programming experience

Applications

- Tube Bending Machines (MCS11X Series)
- Tube Bundle Assembly Machines (MCS12X Series)

Software Family Matrix

Function Description	MCS 110	MCS 111	MCS 120	MCS 121
1 Dedicated Feeder Program	√			
1 Dedicated Bender Program (Up to 3 In Memory To Select from to Run)	√			
1 Dedicated Bulk Hopper Program (Non Programmable)	√			
Up to 3 Bender Programs In Memory To Select	√			
6 Independent Fully Programmable Programs Executed Concurrently (Feeder, Hopper, Unload Rack, etc.)		√		
Fully Programmable Process Part Rejects and Machine Fault Control		√		
Programmable Purge and Reject Features		√		
1 Dedicated Assembly Sequence Program			√	
1 Dedicated Unload (Fallout) Program			√	
Selectable Control of Single or Double Solenoid Valves by user (Programmer)			√	
Fully Programmable Process Part Rejects and Machine Fault Control				√
Programmable Purge and Reject Features				√
Manual Activation of Valves via HMI	√	√	√	√
Selectable Control of Single or Double Solenoid Valves by user (Programmer)	√	√	√	√
Program Backup/Restore Utility (Flash)	√	√	√	√
Basic Assembly Graphics and Assembly Feedback			√	√
Programmable Sequence Branching (Jumps)		√		√
Reject Count Run Mode		√		√
Independent Homing Program		√		√
Test Mode Implementation		√		√
Batch Count Run Mode	√	√	√	√
Basic Fault Messaging and Fault Messaging Recording	√		√	
Fully Descriptive and Programmable Fault/Reject Messaging and Fault/Reject Messaging Recording		√		√

Contact CMP directly for more information beyond the scope of this document



Cambridge Metal Products Inc.
 402 Harmony Road, Ayr, Ontario, Canada, N0B 1E0
 Tel: (519) 740-6035 Fax (519) 622-5894
 Email: sales@cmpinc.ca
 Web: www.cmpinc.ca